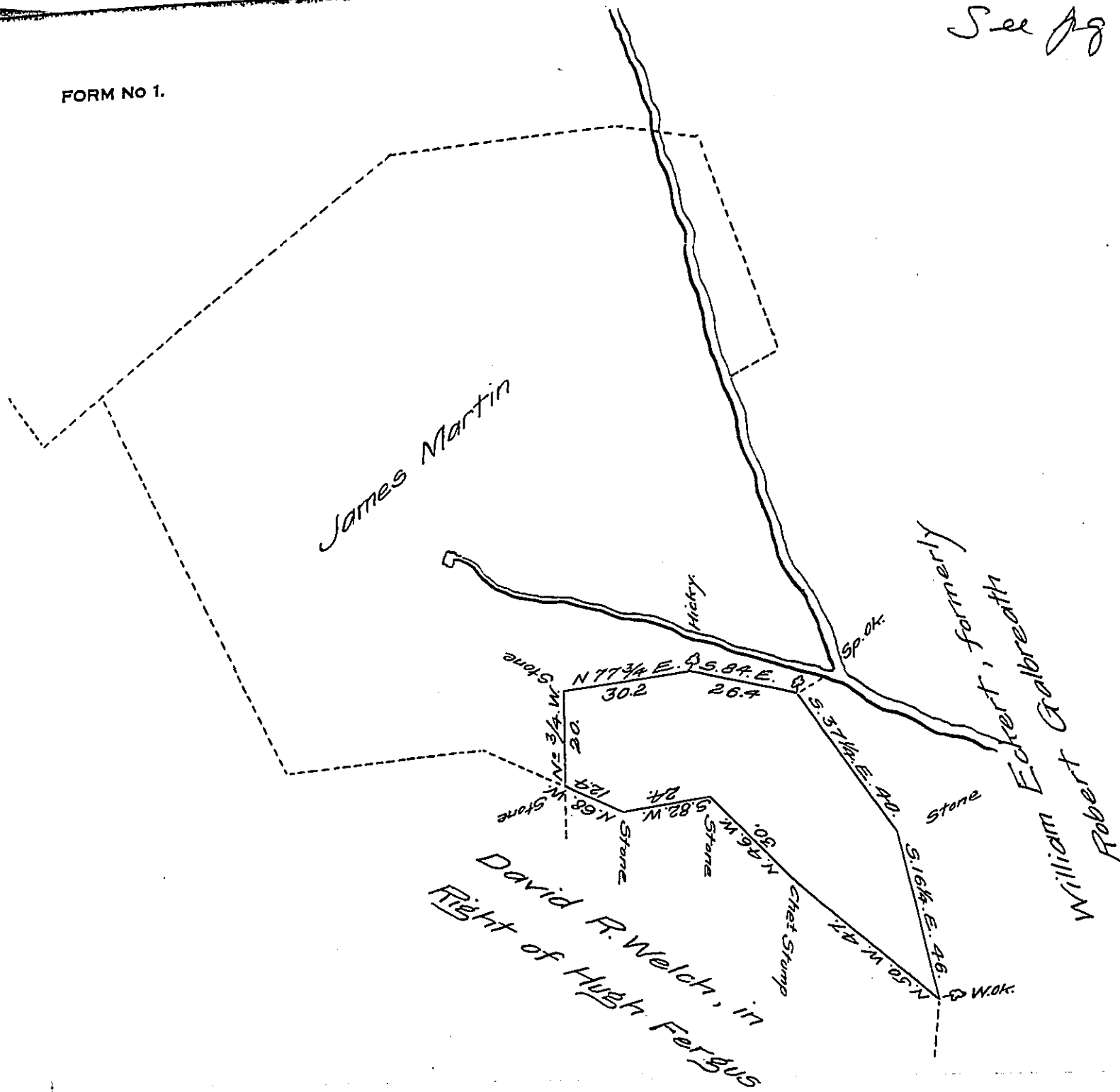


FORM No 1.



The above Draught Made by the black lines Contains  
 16<sup>ac</sup> 2<sup>rs</sup> 30<sup>ps</sup> of Land and the Usual allowance of Six per cent  
 for Roads &c. Situated in Colerain township, Lancaster County,  
 and is a part of 106 acres granted to Francis Cunningham by  
 Warrant dated October 14<sup>th</sup> (1753) 1757, and now Resurveyed the  
 6<sup>th</sup> day of October 1835, for David R. Welch

By James Calwell D.S.

To Jacob Spangler Esq<sup>r</sup> }  
 Surveyor General, Penn<sup>a</sup> }

IN TESTIMONY that the above is a copy of the original remaining on file in  
 the Department of Internal Affairs of Pennsylvania, made  
 conformably to an Act of Assembly approved the 16th day of  
 February, 1833, I have hereunto set my Hand and caused  
 the Seal of said Department to be affixed at Harrisburg,  
 this ninth day of December 1907.

*Henry Howell*  
 Secretary of Internal Affairs.